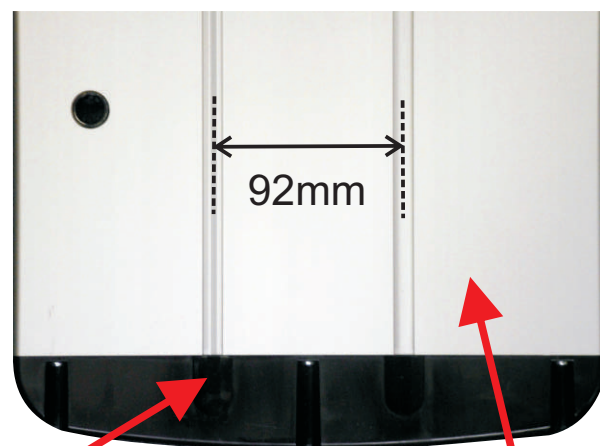
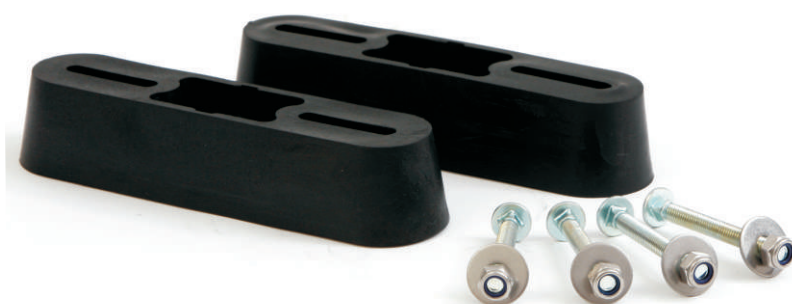


9-000-SBK Instruction Sheet



Insert bolt head here and
slide to desired location

Lightbar
Polycarbonate
Endcap

Lightbar metal
base extrusion

Fitting Instructions

- Choose a suitable location on the vehicle roof for mounting the lightbar. This is usually in a central position in the middle of the roof.
- Slide the mount bolt heads into the grooves on the underside of the base extrusion by offering up the bolt head into the recess provided in the black polycarbonate endcap.
- Taking into account the width of the lightbar base, select suitable positions for the 2 rubber lightbar mounts making sure they are symmetrically placed in relation to the underside of the lightbar.
- Ensure the metal extrusion base of the lightbar will sit on the rubber mounts in its final position.
DO NOT mount the lightbar on the polycarbonate endcaps!!!!
- Mark the position of the mounting holes that pass through the rubber mounts on the vehicle roof/mounting base. The mounting bolts will pass through these from the lightbar into the roof/base.
- Drill 4x 8mm holes through the vehicle roof/base taking care to avoid any internal wiring. The centres of the bolts at each side should be approximately 92mm apart.
- Place the rubber mounts on the vehicle roof/base lining up the holes in the mounts with those in the roof/base.
- Carefully locate the lightbar over the rubber mounts ensuring the 4x bolts pass through their respective mounts and through the holes previously drilled.
- Centralise the lightbar in its final position and secure using the washers & nuts provided.
- Check all nuts to make sure the assembly is secure.